

Public and Private Job Stagnation and Decline Continued in June

Temp Services, Leisure and Entertainment Account for Almost All Private Job Gains

Industry: Nonfarm Jobs (1,000)	June	April	May	June	New Job Growth/Loss	
	2009	2010	2010	2010	One Month	6-'10/6-'09
Total nonfarm.....	130,640	130,162	130,595	130,470	-125	-170
Total private.....	108,075	107,584	107,617	107,700	83	-375
Total private supervisory.....	19,091	18,897	18,916	18,928	12	-163
Total private non-supervisory.....	88,984	88,687	88,701	88,772	71	-212
Goods-producing.....	18,503	17,972	17,985	17,977	-8	-526
Goods-producing supervisory.....	5,186	5,015	5,039	5,031	-8	-155
Goods-producing non-supervisory.....	13,317	12,957	12,946	12,946	0	-371
Service-providing.....	112,137	112,190	112,610	112,493	-117	356
Private Service-providing.....	89,572	89,612	89,632	89,723	91	151
Private Services supervisory.....	13,905	13,882	13,877	13,897	20	-8
Private Services non-supervisory.....	75,667	75,730	75,755	75,826	71	159
Mining and logging.....	692	709	720	725	5	33
Logging.....	49.3	48.9	48.7	48	-1	-1
Mining.....	642.7	659.8	670.8	676.5	6	34
Oil and gas extraction.....	161.6	164.1	165.8	164.2	-2	3
Mining, except oil and gas.....	210	212.4	213	212.9	-0	3
Coal mining.....	82	81.5	82.7	82.7	0	1
Support activities for mining.....	271.1	283.3	292	299.4	7	28
Construction.....	6,029	5,634	5,604	5,582	-22	-447
Construction of buildings.....	1,362.8	1,278.3	1,272.6	1,266.8	-6	-96
Residential building.....	636.3	588.6	586.7	585.2	-2	-51
Nonresidential building.....	726.5	689.7	685.9	681.6	-4	-45
Heavy & civil engineering construction.....	841.3	810.8	801.8	803.1	1	-38
Specialty trade contractors.....	3,824.9	3,544.4	3,529.7	3,512.1	-18	-313
Residential specialty contractor.....	1,615.6	1,543.4	1,541.6	1,537.0	-5	-79
Nonresidential specialty contractor.....	2,209.3	2,001.0	1,988.1	1,975.1	-13	-234
Manufacturing.....	11,782	11,629	11,661	11,670	9	-112
Supervisory workers.....	3,538	3,470	3,478	3,476	-2	-62
Non-supervisory workers.....	8,244	8,159	8,183	8,194	11	-50
Durable goods.....	7,222	7,123	7,153	7,166	13	-56
Supervisory workers.....	2,301	2,251	2,257	2,256	-1	-45
Non-supervisory workers.....	4,921	4,872	4,896	4,910	14	-11
Wood products.....	355.1	352.9	354.6	356.1	2	1
Nonmetallic mineral products.....	394.1	383.4	385.4	383.9	-2	-10
Primary metals.....	355.2	366.7	370.2	372.7	3	18
Fabricated metal products.....	1,305.0	1,290.1	1,298.7	1,305.3	7	0
Machinery.....	1,022.7	991.0	996.5	1,000.0	4	-23
Computer and electronic products.....	1,131.0	1,093.1	1,096.1	1,097.2	1	-34
Computer and peripheral equipment.....	163.7	158.1	158.6	158.4	-0	-5
Communications equipment.....	121.0	119.5	120.9	121.5	1	1
Semiconductors and electronic components...	374.2	364.1	365.2	367.1	2	-7
Electronic instruments.....	421.8	404.6	404.5	403.8	-1	-18
Electrical equipment and appliances.....	374.4	368.2	369.4	369.2	-0	-5
Transportation equipment.....	1,313.0	1,342.4	1,347.3	1,346.9	-0	34
Motor vehicles and parts.....	626.1	677.3	683.5	680.9	-3	55
Furniture and related products.....	382.6	360.5	360.0	360.7	1	-22

Public and Private Job Stagnation and Decline Continued in June

Temp Services, Leisure and Entertainment Account for Almost All Private Job Gains

Industry: Nonfarm Jobs (1,000)	June 2009	April 2010	May 2010	June 2010	New Job Growth/Loss	
					One Month	6-'10/6-'09
Miscellaneous manufacturing.....	588.4	575.1	574.8	573.9	-1	-15
Nondurable goods.....	4,560	4,506	4,508	4,504	-4	-56
Supervisory workers.....	1,237	1,219	1,221	1,220	-1	-17
Non-supervisory workers.....	3,323	3,287	3,287	3,284	-3	-39
Food manufacturing.....	1,459.9	1,459.7	1,459.4	1,457.2	-2	-3
Beverages and tobacco products.....	187.6	183.9	182.9	181.6	-1	-6
Textile mills.....	124.6	123.6	123.6	123.6	0	-1
Textile product mills.....	125.8	122.5	123.2	123.2	0	-3
Apparel.....	165.6	165.8	165.2	165.3	0	-0
Leather and allied products.....	29.4	27.7	28.3	28.7	0	-1
Paper and paper products.....	406.2	399.0	399.2	399.0	-0	-7
Printing and related support activities.....	522.6	497.2	497.0	494.9	-2	-28
Petroleum and coal products.....	115.8	114.8	113.7	113.6	-0	-2
Chemicals.....	801.5	781.7	781.6	779.9	-2	-22
Plastics and rubber products.....	620.7	630.4	633.8	636.5	3	16
Trade, transportation, and utilities.....	24,943	24,741	24,737	24,744	7	-199
Wholesale trade.....	5,612.7	5,576.2	5,573.9	5,574.9	1	-38
Durable goods.....	2,819.6	2,768.1	2,770.8	2,766.5	-4	-53
Nondurable goods.....	1,977.3	1,978.8	1,971.6	1,974.1	3	-3
Electronic markets; agents/brokers.....	815.8	829.3	831.5	834.3	3	19
Retail trade.....	14,545.8	14,453.3	14,442.4	14,435.8	-7	-110
Motor vehicle and parts dealers.....	1,630.7	1,631.0	1,633.5	1,628.6	-5	-2
Automobile dealers.....	1,013.1	1,016.9	1,014.8	1,014.6	-0	2
Furniture and home furnishings stores.....	447.1	441.4	441.6	442.8	1	-4
Electronics and appliance stores.....	484.5	479.5	479.9	479.6	-0	-5
Building material/garden supply stores.....	1,163.3	1,173.4	1,169.8	1,174.9	5	12
Food and beverage stores.....	2,839.8	2,809.8	2,806.6	2,800.5	-6	-39
Health and personal care stores.....	986.1	974.7	976.2	972.7	-4	-13
Gasoline stations.....	825.9	821.3	822.7	819.5	-3	-6
Clothing and accessories stores.....	1,369.7	1,393.0	1,387.0	1,386.9	-0	17
Sporting goods, hobby, book, music stores.....	619.1	611.5	608.1	609.1	1	-10
General merchandise stores.....	2,970.8	2,925.9	2,927.4	2,933.5	6	-37
Department stores.....	1,473.3	1,479.3	1,478.3	1,481.8	4	9
Miscellaneous store retailers.....	786.1	770.9	768.1	764.7	-3	-21
Nonstore retailers.....	422.7	420.9	421.5	423	2	0
Transportation and warehousing.....	4,223.2	4,153.6	4,162.8	4,177.4	15	-46
Air transportation.....	457.8	453.3	454.8	456.0	1	-2
Rail transportation.....	217.3	215.6	216.4	218.8	2	2
Water transportation.....	62.6	62.9	63.8	64.0	0	1
Truck transportation.....	1,260.0	1,231.3	1,235.0	1,236.0	1	-24
Transit & ground passenger transport.....	427.8	414.8	413.9	415.9	2	-12
Pipeline transportation.....	41.3	39.7	39.1	39.4	0	-2
Scenic and sightseeing transport.....	27.9	28.8	29.3	30.2	1	2
Support activities for transport.....	543.3	540.7	543	544.7	2	1
Couriers and messengers.....	543.1	522.3	521.5	523.1	2	-20
Warehousing and storage.....	642.1	644.2	646	649.3	3	7

Public and Private Job Stagnation and Decline Continued in June

Temp Services, Leisure and Entertainment Account for Almost All Private Job Gains

Industry: Nonfarm Jobs (1,000)	June 2009	April 2010	May 2010	June 2010	New Job Growth/Loss	
					One Month	6-'10/6-'09
Utilities.....	561.2	557.7	557.5	556.1	-1	-5
Information.....	2,797	2,727	2,723	2,715	-8	-82
Publishing industries, except Internet.....	794.5	762.9	762.6	760.6	-2	-34
Motion picture and sound recording.....	345.7	349.2	354.2	353.2	-1	8
Broadcasting, except Internet.....	300.4	295.9	294.7	294.2	-1	-6
Telecommunications.....	972.4	933.9	927.6	925.3	-2	-47
Data processing, hosting and related.....	249.5	247.4	246.2	244.7	-2	-5
Other information services.....	134.9	137.3	138.0	137.2	-1	2
Financial activities.....	7,742	7,611	7,599	7,584	-15	-158
Finance and insurance.....	5,756.8	5,656.6	5,652.0	5,645.6	-6	-111
Monetary authorities - central bank.....	20.9	21.2	21.2	21.2	0	0
Credit intermediation and related.....	2,592.0	2,563.2	2,562.7	2,562.3	-0	-30
Depository credit intermediation.....	1,758.0	1,752.4	1,752.8	1,754.9	2	-3
Commercial banking.....	1,316.3	1,312.4	1,312.3	1,312.7	0	-4
Securities, commodity, investments.....	805.4	797.1	796.4	797.2	1	-8
Insurance carriers, related activities.....	2,250.1	2,190.0	2,186.3	2,179.4	-7	-71
Funds, trusts, other financial vehicles.....	88.4	85.1	85.4	85.5	0	-3
Real estate and rental/leasing.....	1,984.8	1,954.4	1,946.7	1,938.2	-9	-47
Real estate.....	1,406.2	1,393.5	1,387.5	1,381.0	-7	-25
Rental and leasing services.....	552.3	536.5	534.9	533.2	-2	-19
Lessors of nonfinancial intangibles.....	26.3	24.4	24.3	24.0	-0	-2
Professional and business services.....	16,453	16,638	16,663	16,709	46	256
Professional and technical services.....	7,481.6	7,418.8	7,405.2	7,409.2	4	-72
Legal services.....	1,121.8	1,104.1	1,103.5	1,099.6	-4	-22
Accounting and bookkeeping.....	918.8	908.8	898.2	894.3	-4	-25
Architectural and engineering.....	1,318.9	1,280.0	1,278.4	1,278.0	-0	-41
Computer systems design and related.....	1,417.7	1,443.7	1,445.7	1,445.4	-0	28
Management and technical consulting.....	988.5	984.4	980.7	991.2	11	3
Management of companies and enterprises.....	1,854.5	1,824.0	1,825.3	1,826.2	1	-28
Administrative and waste services.....	7,116.5	7,395.2	7,432.7	7,473.8	41	357
Administrative and support services.....	6,767.3	7,046.1	7,080.0	7,120.3	40	353
Employment services.....	2,421.7	2,730.6	2,770.2	2,806.0	36	384
Temporary help services.....	1,758.1	2,051.7	2,082.8	2,103.3	21	345
Business support services.....	808.7	794.7	793.7	800.4	7	-8
Services to buildings and dwellings.....	1,743.3	1,726.5	1,724.8	1,719.1	-6	-24
Waste management and remediation.....	349.2	349.1	352.7	353.5	1	4
Education and health services.....	19,165	19,477	19,497	19,519	22	354
Educational services.....	3,091.7	3,133.6	3,137.6	3,142.7	5	51
Health care and social assistance.....	16,073.4	16,343.8	16,359.8	16,376.6	17	303
Health care.....	13,519.8	13,716.6	13,727.9	13,737.2	9	217
Ambulatory health care services.....	5,769.9	5,892.8	5,902.7	5,910.1	7	140
Offices of physicians.....	2,273.5	2,312.5	2,314.2	2,313.3	-1	40
Outpatient care centers.....	545.0	551.2	551.2	551.9	1	7
Home health care services.....	1,023.8	1,063.4	1,063.8	1,065.9	2	42
Hospitals.....	4,672.1	4,710.3	4,707.9	4,705.7	-2	34
Nursing and residential care facilities.....	3,077.8	3,113.5	3,117.3	3,121.4	4	44
Nursing care facilities.....	1,644.4	1,653.0	1,654.1	1,655.5	1	11
Social assistance.....	2,553.6	2,627.2	2,631.9	2,639.4	8	86

Public and Private Job Stagnation and Decline Continued in June

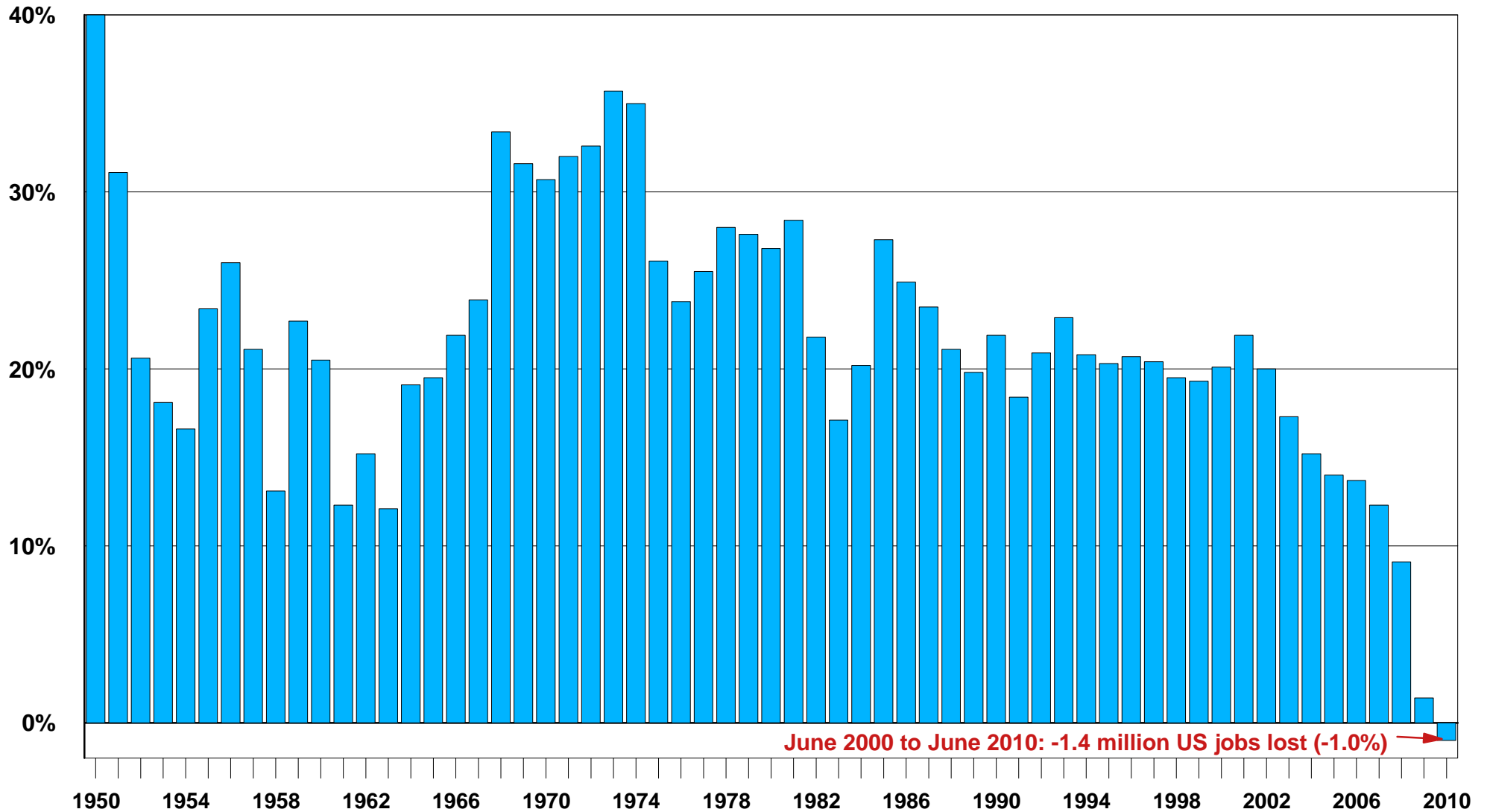
Temp Services, Leisure and Entertainment Account for Almost All Private Job Gains

Industry: Nonfarm Jobs (1,000)	June 2009	April 2010	May 2010	June 2010	New Job Growth/Loss	
					One Month	6-'10/6-'09
Child day care services.....	851.3	867.6	865.6	873.1	8	22
Leisure and hospitality.....	13,105	13,085	13,077	13,114	37	9
Arts, entertainment, and recreation.....	1,896.4	1,905.0	1,893.6	1,923.6	30	27
Performing arts and spectator sports.....	396.1	404.6	410.1	411.6	2	16
Museums, historical sites, zoos & parks.....	130.1	129.2	128.7	129.5	1	-1
Amusements, gambling, & recreation.....	1,370.2	1,371.2	1,354.8	1,382.5	28	12
Accommodations and food services.....	11,208.7	11,180.0	11,183.7	11,190.0	6	-19
Accommodations.....	1,759.0	1,740.3	1,747.1	1,754.7	8	-4
Food services and drinking places.....	9,449.7	9,439.7	9,436.6	9,435.3	-1	-14
Other services.....	5,367	5,333	5,336	5,338	2	-29
Repair and maintenance.....	1,150.4	1,146.1	1,150.2	1,147.4	-3	-3
Personal and laundry services.....	1,282.3	1,273.1	1,273.3	1,274.2	1	-8
Membership assocs & organizations.....	2,934.5	2,914.1	2,912.3	2,916.5	4	-18
Government.....	22,565	22,578	22,978	22,770	-208	205
Federal.....	2,810.0	2,988.0	3,406.0	3,208.0	-198	398
Federal, except U.S. Postal Service.....	2,106.3	2,326.8	2,748.0	2,552.7	-195	446
U.S. Postal Service.....	703.9	661.1	658.4	654.9	-4	-49
State government.....	5,177.0	5,169.0	5,161.0	5,159.0	-2	-18
State government education.....	2,366.1	2,392.0	2,389.4	2,385.4	-4	19
State government, ex education.....	2,810.7	2,777.3	2,771.2	2,773.9	3	-37
Local government.....	14,578.0	14,421.0	14,411.0	14,403.0	-8	-175
Local government education.....	8,094.1	8,009.2	8,008.9	8,008.4	-1	-86
Local government, ex education.....	6,483.6	6,411.7	6,402.2	6,394.4	-8	-89

U.S. Department of Labor, BLS and MBG Information Services "www.mbginfosvcs.com"

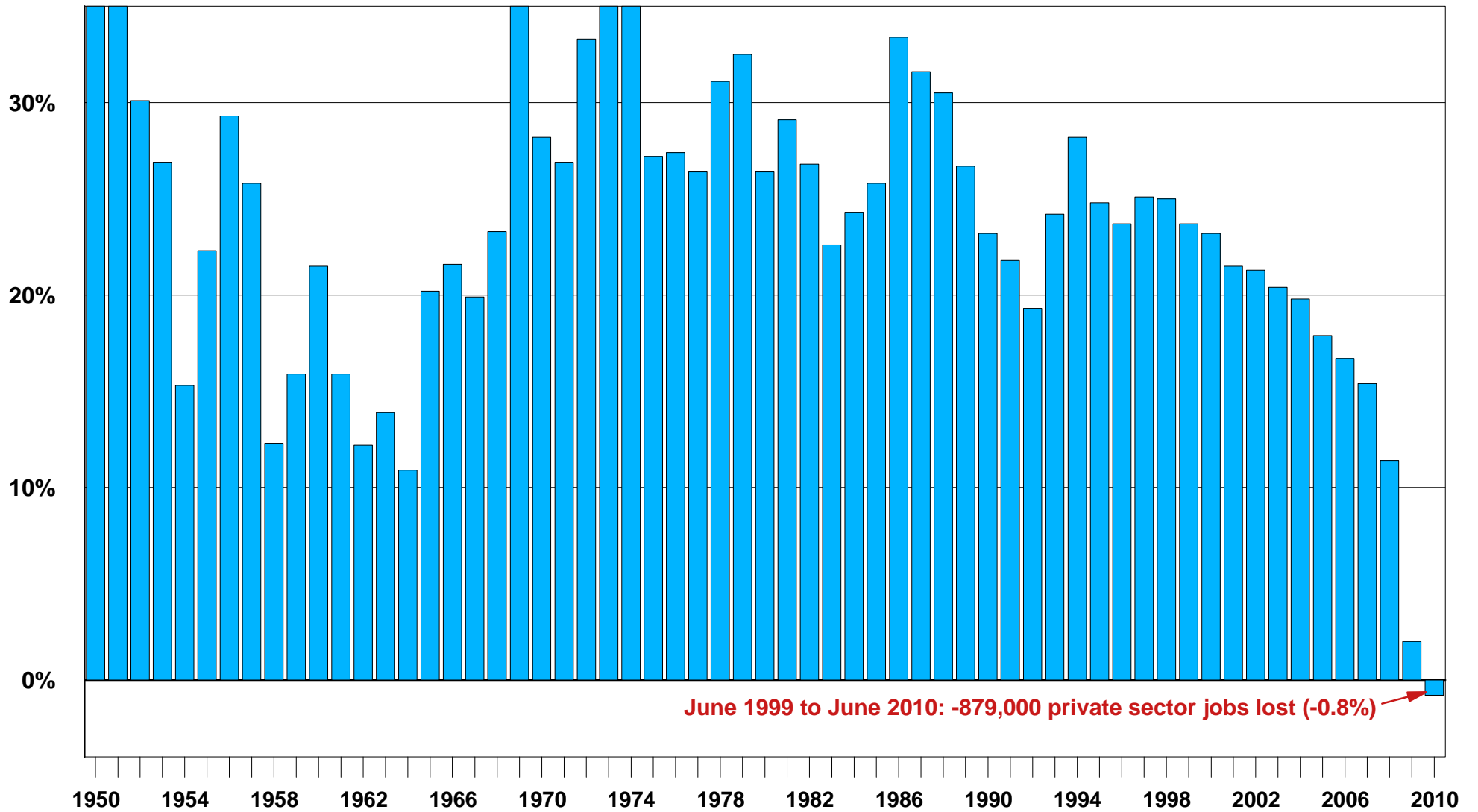
First 10-Year Loss in All US Jobs Since 1928-'38

% US Job Growth: Ten Years Ending June Each Year



First 11-Years of Private Sector Job Losses Since the 1930s

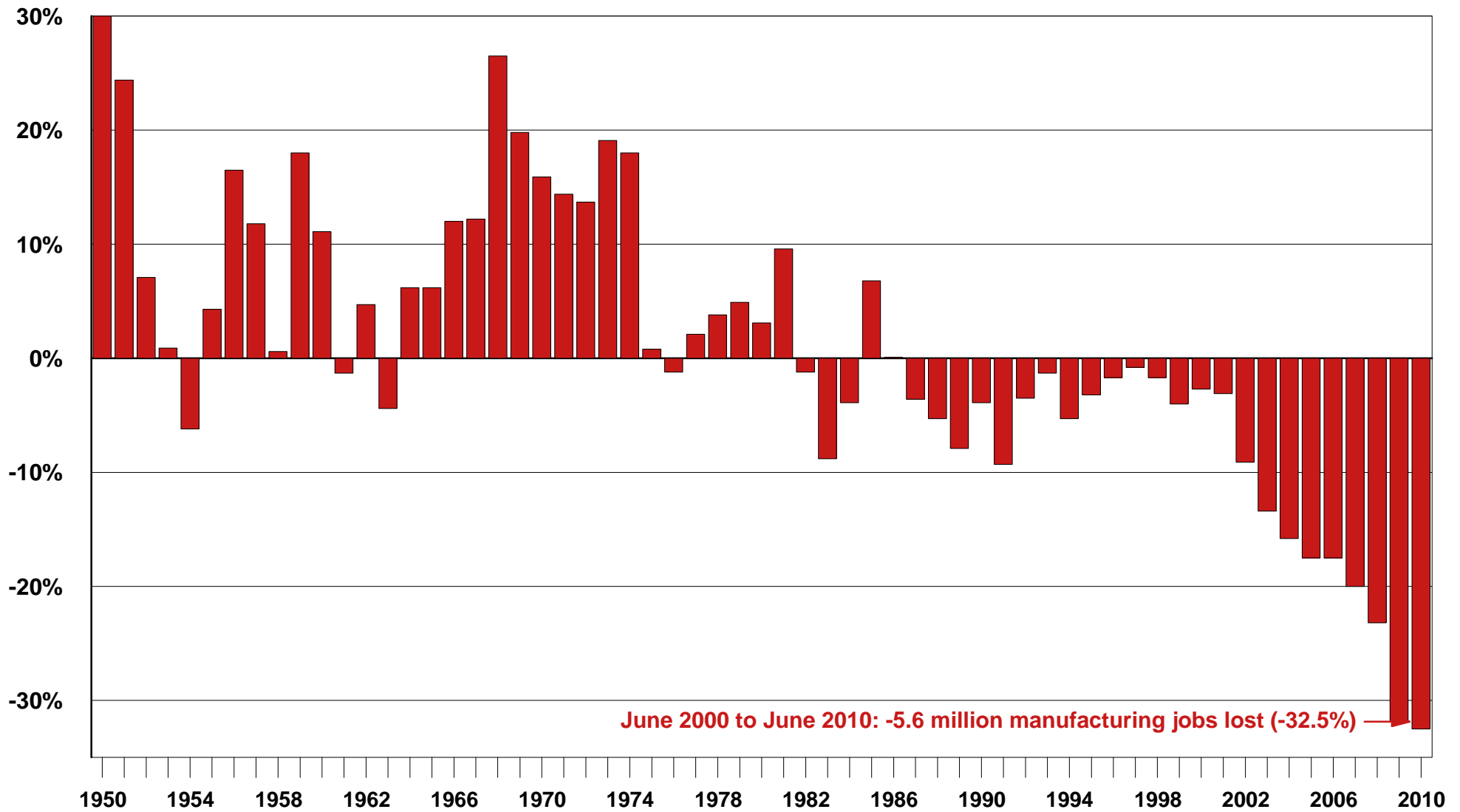
% Growth of US Private Sector Jobs: Eleven Years Ending June Each Year



June 1999 to June 2010: -879,000 private sector jobs lost (-0.8%)

The Worst Ever 10-Year Plunge of Manufacturing Jobs

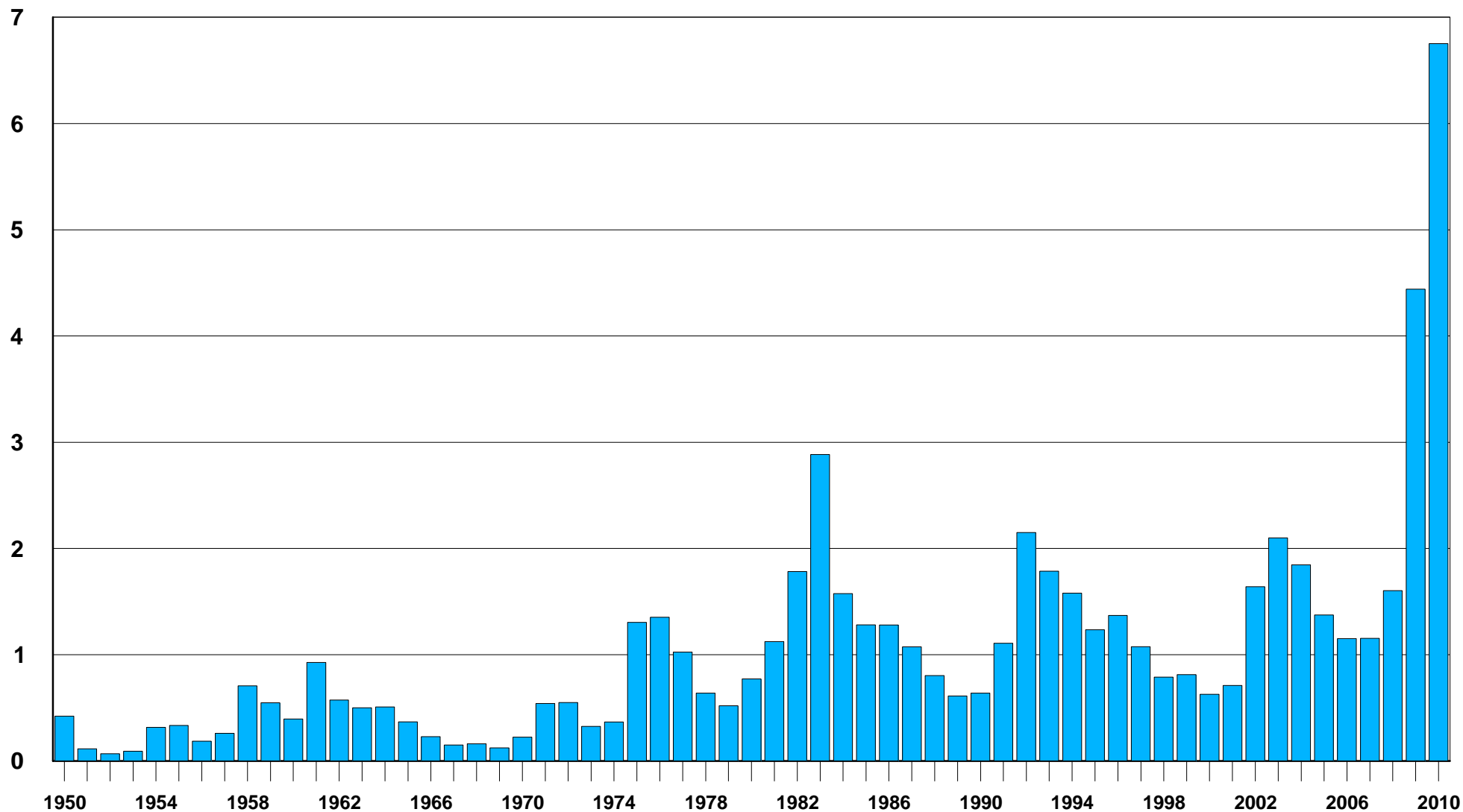
% US Manufacturing Job Growth or Loss: Ten Years Ending June Each Year



June 2000 to June 2010: -5.6 million manufacturing jobs lost (-32.5%)

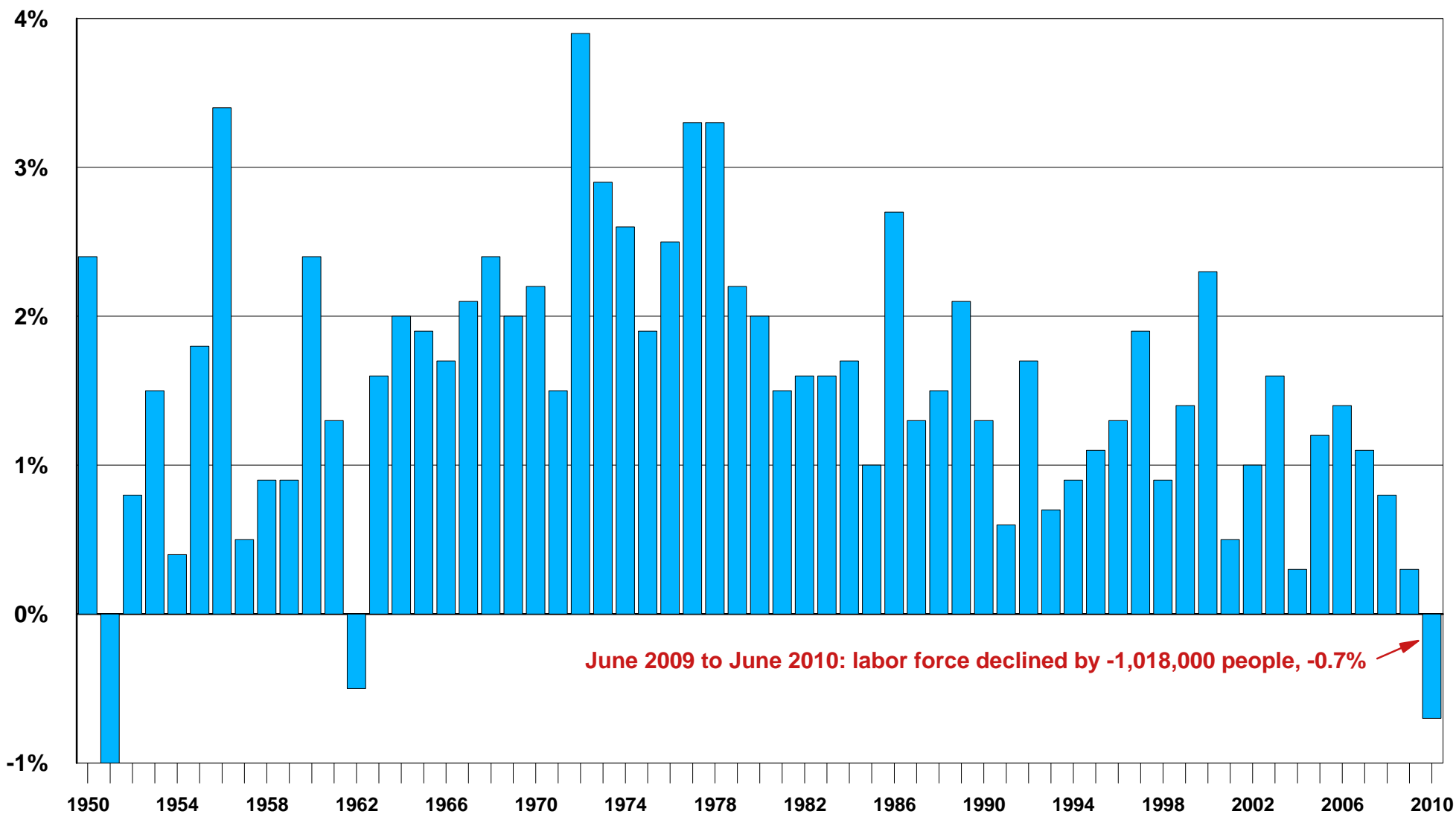
Soaring Record Numbers of People Jobless 27 Weeks or More Today's Long-term Unemployed Are Far Worse Than Any on Records

Millions of People Officially Unemployed for 27 weeks or more: June each Year



Rare, yr/yr decline in Labor Force as unemployed are uncounted: Almost One Million Unemployed Left Rolls in May and June

% Yr/Yr change in Labor Force -- those working or counted as looking for work: June each Year

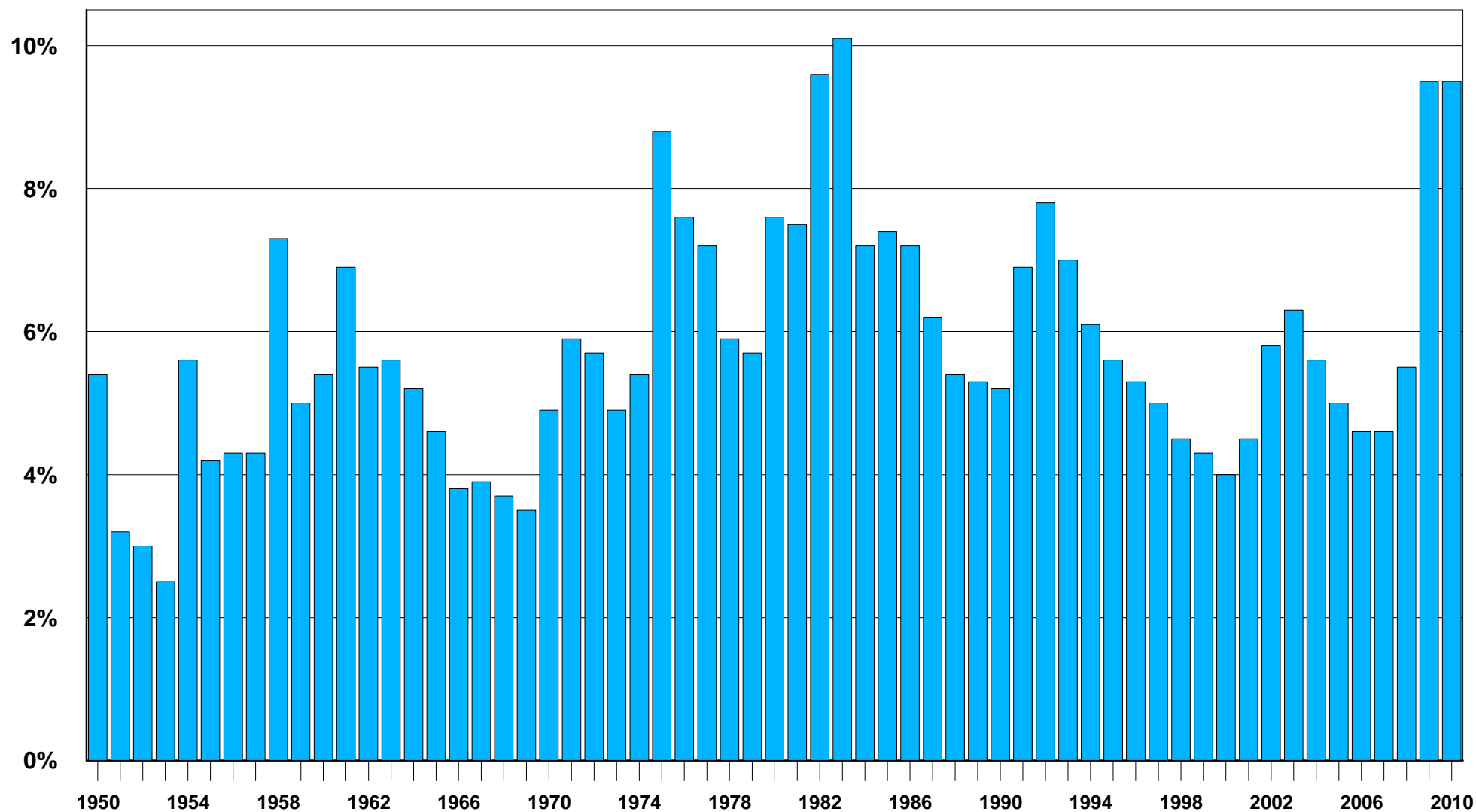


June 2009 to June 2010: labor force declined by -1,018,000 people, -0.7%

Even with Labor Force Decline, Unemployment Is Near Record

Worst levels since Depression Except for late-1982/early-1983

% of the active Labor Force that is Unemployed: June each year



The Last 10-Years Had the Worst Jobs Record Since 1928-1938

Private Sector Lost -3.3 Million Jobs including the loss of -1.7 Million Supervisory Jobs

Industry: Nonfarm Jobs (1,000)	June 2000	June 2010	Change Over Past 10 Years (Thousands)	(Percent)
Total nonfarm.....	131,839	130,470	-1369	-1.0%
Total private.....	110,952	107,700	-3252	-2.9%
Total private supervisory.....	20,623	18,928	-1695	-8.2%
Total private non-supervisory.....	90329	88,772	-1557	-1.7%
Goods-producing.....	24,674	17,977	-6697	-27.1%
Goods-producing supervisory.....	6,468	5,031	-1437	-22.2%
Goods-producing non-supervisory.....	18206	12,946	-5260	-28.9%
Service-providing.....	107,165	112,493	5328	5.0%
Private Service-providing.....	86,278	89,723	3445	4.0%
Private Services supervisory.....	14,155	13,897	-258	-1.8%
Private Services non-supervisory.....	72123	75,826	3703	5.1%
Mining and logging.....	598	725	127	21.2%
Logging.....	78.8	48	-31	-39.1%
Mining.....	519.0	676.5	158	30.3%
Oil and gas extraction.....	125.6	164.2	39	30.7%
Mining, except oil and gas.....	224.0	212.9	-11	-5.0%
Coal mining.....	71.4	82.7	11	15.8%
Support activities for mining.....	169.4	299.4	130	76.7%
Construction.....	6,778.0	5,582	-1196	-17.6%
Construction of buildings.....	1,638.1	1,266.8	-371	-22.7%
Residential building.....	826.7	585.2	-242	-29.2%
Nonresidential building.....	811.4	681.6	-130	-16.0%
Heavy & civil engineering construction.....	935.6	803.1	-133	-14.2%
Specialty trade contractors.....	4,204.5	3,512.1	-692	-16.5%
Residential specialty contractor.....	NA	1,537.0	NA	NA
Nonresidential specialty contractor.....	NA	1,975.1	NA	NA
Manufacturing.....	17,298.0	11,670	-5628	-32.5%
Supervisory workers.....	4,830	3,476	-1354	-28.0%
Non-supervisory workers.....	12468	8,194	-4274	-34.3%
Durable goods.....	10,909.0	7,166	-3743	-34.3%
Supervisory workers.....	3,217	2,256	-961	-29.9%
Non-supervisory workers.....	7692	4,910	-2782	-36.2%
Wood products.....	618.0	356.1	-262	-42.4%
Nonmetallic mineral products.....	555.5	383.9	-172	-30.9%
Primary metals.....	623.6	372.7	-251	-40.2%
Fabricated metal products.....	1,758.6	1,305.3	-453	-25.8%
Machinery.....	1,459.3	1,000.0	-459	-31.5%
Computer and electronic products.....	1,806.0	1,097.2	-709	-39.2%
Computer and peripheral equipment.....	296.2	158.4	-138	-46.5%
Communications equipment.....	236.8	121.5	-115	-48.7%
Semiconductors and electronic components...	671.4	367.1	-304	-45.3%

The Last 10-Years Had the Worst Jobs Record Since 1928-1938

Private Sector Lost -3.3 Million Jobs including the loss of -1.7 Million Supervisory Jobs

Industry: Nonfarm Jobs (1,000)	June 2000	June 2010	Change Over Past 10 Years (Thousands)	(Percent)
Electronic instruments.....	485.5	403.8	-82	-16.8%
Electrical equipment and appliances.....	592.6	369.2	-223	-37.7%
Transportation equipment.....	2,082.8	1,346.9	-736	-35.3%
Motor vehicles and parts.....	1,329.8	680.9	-649	-48.8%
Furniture and related products.....	683.9	360.7	-323	-47.3%
Miscellaneous manufacturing.....	728.3	573.9	-154	-21.2%
Nondurable goods.....	6,389	4,504	-1885	-29.5%
Supervisory workers.....	1,613	1,220	-393	-24.4%
Non-supervisory workers.....	4776	3,284	-1492	-31.2%
Food manufacturing.....	1,542.8	1,457.2	-86	-5.5%
Beverages and tobacco products.....	205.8	181.6	-24	-11.8%
Textile mills.....	380.0	123.6	-256	-67.5%
Textile product mills.....	229.7	123.2	-107	-46.4%
Apparel.....	486.5	165.3	-321	-66.0%
Leather and allied products.....	70.0	28.7	-41	-59.0%
Paper and paper products.....	605.2	399.0	-206	-34.1%
Printing and related support activities.....	809.0	494.9	-314	-38.8%
Petroleum and coal products.....	124.6	113.6	-11	-8.8%
Chemicals.....	980.3	779.9	-200	-20.4%
Plastics and rubber products.....	955.5	636.5	-319	-33.4%
Trade, transportation, and utilities.....	26,205	24,744	-1461	-5.6%
Wholesale trade.....	5,944.7	5,574.9	-370	-6.2%
Durable goods.....	3,259.4	2,766.5	-493	-15.1%
Nondurable goods.....	2,065.9	1,974.1	-92	-4.4%
Electronic markets; agents/brokers.....	619.4	834.3	215	34.7%
Retail trade.....	15,257.1	14,435.8	-821	-5.4%
Motor vehicle and parts dealers.....	1,844.2	1,628.6	-216	-11.7%
Automobile dealers.....	1,217.5	1,014.6	-203	-16.7%
Furniture and home furnishings stores.....	544.4	442.8	-102	-18.7%
Electronics and appliance stores.....	565.5	479.6	-86	-15.2%
Building material/garden supply stores.....	1,142.5	1,174.9	32	2.8%
Food and beverage stores.....	2,999.3	2,800.5	-199	-6.6%
Health and personal care stores.....	926.1	972.7	47	5.0%
Gasoline stations.....	937.2	819.5	-118	-12.6%
Clothing and accessories stores.....	1,318.7	1,386.9	68	5.2%
Sporting goods, hobby, book, music stores.....	677.2	609.1	-68	-10.1%
General merchandise stores.....	2,796.5	2,933.5	137	4.9%
Department stores.....	1,740.6	1,481.8	-259	-14.9%
Miscellaneous store retailers.....	1,011.2	764.7	-247	-24.4%
Nonstore retailers.....	494.3	423	-71	-14.4%

The Last 10-Years Had the Worst Jobs Record Since 1928-1938

Private Sector Lost -3.3 Million Jobs including the loss of -1.7 Million Supervisory Jobs

Industry: Nonfarm Jobs (1,000)	June 2000	June 2010	Change Over Past 10 Years (Thousands)	(Percent)
Transportation and warehousing.....	4,403.1	4,177.4	-226	-5.1%
Air transportation.....	612.6	456.0	-157	-25.6%
Rail transportation.....	231.1	218.8	-12	-5.3%
Water transportation.....	57.2	64.0	7	11.9%
Truck transportation.....	1,404.9	1,236.0	-169	-12.0%
Transit & ground passenger transport.....	371.6	415.9	44	11.9%
Pipeline transportation.....	45.8	39.4	-6	-14.0%
Scenic and sightseeing transport.....	26.9	30.2	3	12.3%
Support activities for transport.....	534.3	544.7	10	1.9%
Couriers and messengers.....	603.4	523.1	-80	-13.3%
Warehousing and storage.....	515.3	649.3	134	26.0%
Utilities.....	599.7	556.1	-44	-7.3%
Information.....	3,642.0	2,715	-927	-25.5%
Publishing industries, except Internet.....	1,036.6	760.6	-276	-26.6%
Motion picture and sound recording.....	383.2	353.2	-30	-7.8%
Broadcasting, except Internet.....	343.7	294.2	-50	-14.4%
Telecommunications.....	1,402.1	925.3	-477	-34.0%
Data processing, hosting and related.....	317.1	244.7	-72	-22.8%
Other information services.....	158.8	137.2	-22	-13.6%
Financial activities.....	7,671.0	7,584	-87	-1.1%
Finance and insurance.....	5,665.5	5,645.6	-20	-0.4%
Monetary authorities - central bank.....	22.8	21.2	-2	-7.0%
Credit intermediation and related.....	2,542.3	2,562.3	20	0.8%
Depository credit intermediation.....	1,680.9	1,754.9	74	4.4%
Commercial banking.....	1,250.3	1,312.7	62	5.0%
Securities, commodity, investments.....	800.3	797.2	-3	-0.4%
Insurance carriers, related activities.....	2,219.3	2,179.4	-40	-1.8%
Funds, trusts, other financial vehicles.....	80.8	85.5	5	5.8%
Real estate and rental/leasing.....	2,005.6	1,938.2	-67	-3.4%
Real estate.....	1,309.7	1,381.0	71	5.4%
Rental and leasing services.....	668.6	533.2	-135	-20.3%
Lessors of nonfinancial intangibles.....	27.3	24.0	-3	-12.1%
Professional and business services.....	16,659.0	16,709	50	0.3%
Professional and technical services.....	6,688.6	7,409.2	721	10.8%
Legal services.....	1,066.0	1,099.6	34	3.2%
Accounting and bookkeeping.....	861.1	894.3	33	3.9%
Architectural and engineering.....	1,239.3	1,278.0	39	3.1%
Computer systems design and related.....	1,246.9	1,445.4	199	15.9%
Management and technical consulting.....	671.1	991.2	320	47.7%
Management of companies and enterprises.....	1,794.9	1,826.2	31	1.7%
Administrative and waste services.....	8,175.3	7,473.8	-702	-8.6%
Administrative and support services.....	7,863.0	7,120.3	-743	-9.4%

The Last 10-Years Had the Worst Jobs Record Since 1928-1938

Private Sector Lost -3.3 Million Jobs including the loss of -1.7 Million Supervisory Jobs

Industry: Nonfarm Jobs (1,000)	June	June	Change Over Past 10 Years	
	2000	2010	(Thousands)	(Percent)
Employment services.....	3,870.0	2,806.0	-1064	-27.5%
Temporary help services.....	2,647.7	2,103.3	-544	-20.6%
Business support services.....	786.9	800.4	14	1.7%
Services to buildings and dwellings.....	1,563.0	1,719.1	156	10.0%
Waste management and remediation.....	312.3	353.5	41	13.2%
Education and health services.....	15,071.0	19,519	4,448	29.5%
Educational services.....	2,387.6	3,142.7	755	31.6%
Health care and social assistance.....	12,683.7	16,376.6	3,693	29.1%
Health care.....	10,834.5	13,737.2	2,903	26.8%
Ambulatory health care services.....	4,313.8	5,910.1	1,596	37.0%
Offices of physicians.....	1,834.1	2,313.3	479	26.1%
Outpatient care centers.....	385.4	551.9	167	43.2%
Home health care services.....	634.8	1,065.9	431	67.9%
Hospitals.....	3,944.6	4,705.7	761	19.3%
Nursing and residential care facilities.....	2,576.1	3,121.4	545	21.2%
Nursing care facilities.....	1,510.2	1,655.5	145	9.6%
Social assistance.....	1,849.2	2,639.4	790	42.7%
Child day care services.....	691.6	873.1	182	26.2%
Leisure and hospitality.....	11,869.0	13,114	1,245	10.5%
Arts, entertainment, and recreation.....	1,799.0	1,923.6	125	6.9%
Performing arts and spectator sports.....	390.1	411.6	22	5.5%
Museums, historical sites, zoos & parks.....	110.5	129.5	19	17.2%
Amusements, gambling, & recreation.....	1,298.4	1,382.5	84	6.5%
Accommodations and food services.....	10,069.8	11,190.0	1,120	11.1%
Accommodations.....	1,895.2	1,754.7	-141	-7.4%
Food services and drinking places.....	8,174.6	9,435.3	1,261	15.4%
Other services.....	5,161.0	5,338	177	3.4%
Repair and maintenance.....	1,237.2	1,147.4	-90	-7.3%
Personal and laundry services.....	1,240.3	1,274.2	34	2.7%
Membership assocs & organizations.....	2,683.0	2,916.5	234	8.7%
Government.....	20,887.0	22,770	1,883	9.0%
Federal.....	3,004.0	3,208.0	204	6.8%
Federal, except U.S. Postal Service.....	2,125.9	2,552.7	427	20.1%
U.S. Postal Service.....	878.3	654.9	-223	-25.4%
State government.....	4,776.0	5,159.0	383	8.0%
State government education.....	2,024.4	2,385.4	361	17.8%
State government, ex education.....	2,751.4	2,773.9	23	0.8%
Local government.....	13,107.0	14,403.0	1,296	9.9%
Local government education.....	7,262.1	8,008.4	746	10.3%
Local government, ex education.....	5,845.0	6,394.4	549	9.4%

U.S. Dept. of Labor, BLS and MBG Information Services "www.mbginfosvcs.com"